

CELEBRATING
30 YEARS



.....
1984 - 2014
.....

The Journey Begins

KAR was set up in 1984 by Kevan Roberts, initially to supply decorating services to national housing developers.



First major contract



BARRATT

First credit account opened with
C. Brewers & Sons Ltd

Brewers
FOR DECORATING MATERIALS

1980's


First major contract secured with Barratt Homes Ltd.

Major refurbishment of pubs and restaurants across the South.

Employment of staff begins.

1990's

Expansion begins, Dave Le Brocq joins company as Finance Director. Surveying and accounts departments evolve.

Foundations are formed to enable growth and expansion of 



Kevan Roberts
Managing Director



Dan Roberts
Director



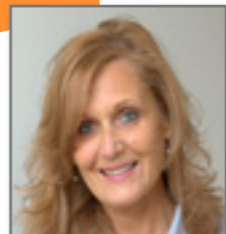
Dave LeBrocq
Finance Director



Paul Brown
Contracts Manager



Rob May
Surveyor



Jenny Leese
Secretary



Val Casey
Accounts Manager



Paul Williams
Contracts Manager

2000's

Rob May recruited as Junior Surveyor in 2001, completes apprenticeship in 2004.

Paul Williams is promoted to Contracts Manager in 2014



Our Clients

First Wessex Brymor Contractors Ltd Redrow Homes
City & Country Barratt Homes Ltd Daintree Developments Ltd
Bellway Homes Churchill Retirement Living
Drew Smith Ltd MPR Management Ltd Broadleaf Homes Ltd
Matthew Homes Persimmon Homes Ltd
Midas Construction Southcott Homes Mansells
McCarthy & Stone The Construction Partnership Crest Nicholson Ltd
Royal Winchester Golf Club Daulton Homes North East Clayesmore School Amiri Construction
Linden Homes Southern Ltd Kier Construction David Wilson Homes
Lovells Partnership Berkeley Homes Forman Homes Ltd Morgan Sindall
Modern Housing Solutions Dellwharf Residents Association West End Construction

Accreditations



Accredited Contractor




Shows its
commitment to the
industry by the
accreditations and
affiliations achieved



New Director

Due to the growth of the company Dan Roberts is promoted to Director in 2014.

This will enable  to achieve increased control on quality and all aspects of Health and safety.

Dan's role will evolve to enable  to provide a closer relationship with its clients.



The Journey Continues



Norman Gilbert House · 38 Mitchell Point · Ensign Way · Hamble-Le-Rice · Southampton · SO31 4RF
t: 023 8045 5123 · f: 023 8045 5999 · www.karpaintingcontractors.co.uk